

Douilles de tuyau Schlauchtüllen

Matière: Laiton

Werkstoff: Messing

Raccord rotatif

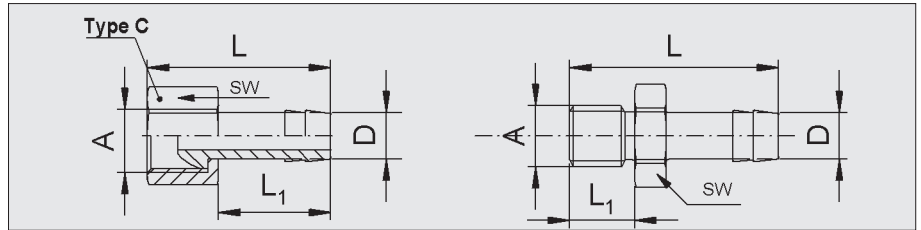
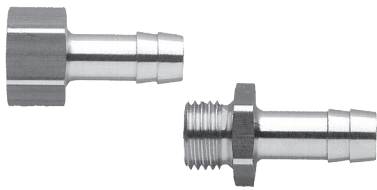
Bewegliche Tüllen

Exemple de commande:

Bestellbeispiel:

0164 10 08

D A



| No d'article Artikelnummer | A | D | L | L ₁ | SW |
|-------------------------------|----------|----|------|----------------|----|
| 0164 1008 | M8x0,75 | 10 | 33,5 | 7 | 11 |
| 0164 1010 | M10x1 | | | | |
| 0164 101/8 | 1/8" BSP | 13 | 33 | 9 | 14 |
| 0164 101/4 | 1/4" BSP | | 35 | | |
| 0164 1312 | M12x1,5 | 13 | 40 | 10 | 15 |
| 0164 131/4 | 1/4" BSP | | 42 | | |
| 0164 1314 | M14x1,5 | 13 | 43 | 9 | 17 |
| 0164 1316 | M16x1,5 | | 40 | | |
| 0164 133/8 | 3/8" BSP | 19 | 42 | 16 | 19 |
| 0164 1924 | M24x1,5 | | 56 | | |

Douilles avec ravaudage et épaulement livrables du stock.

| No d'article Artikelnummer | A | D | L | L ₁ | SW |
|-------------------------------|----------|----|------|----------------|----|
| 0164 191/2 | 1/2" BSP | 19 | 54 | 12 | 24 |
| 0164 193/4 | 3/4" BSP | | 60 | | |
| Type C | | | | | |
| 0164 C1014 | M14x1,5 | 10 | 39,5 | 22 | 17 |
| 0164 C101/4 | G 1/4 | | | | |
| 0164 C1316 | M16x1,5 | 13 | 39 | 25 | 22 |
| 0164 C133/8 | G 3/8 | | | | |
| 0164 C131/2 | G 1/2 | 19 | 45 | 32 | 24 |
| 0164 C1924 | M24x1,5 | | 52 | | |
| 0164 C193/4 | G 3/4 | | | | 32 |

Schlauchtülle mit Innengewinde und starrer Hülse auch ab Lager lieferbar.

Douilles de tuyau 90° Schlauchtüllen 90°

Matière:

Laiton / Nickelé

Werkstoff:

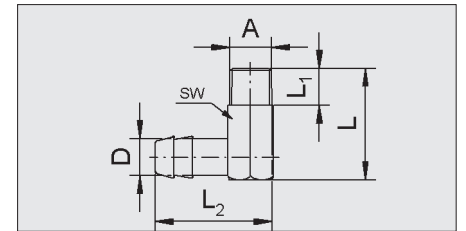
Messing / vernickelt

Exemple de commande:

Bestellbeispiel:

0164 08 10 90

A D L₁



| No d'article Artikelnummer | A | D | L | L ₁ | L ₂ | SW |
|-------------------------------|----------|----|----|----------------|----------------|----|
| 0164 081090 | M8x0,75 | 10 | 27 | 9 | 33,5 | 11 |
| 0164 101090 | M10x1 | | | | 28,5 | |
| 0164 1/81090 | 1/8" BSP | 13 | 34 | 11 | 40 | 15 |
| 0164 1/41090 | 1/4" BSP | | | | | |
| 0164 141390 | M14x1,5 | 13 | 35 | 12 | 42 | 17 |
| 0164 3/81390 | 3/8" BSP | | | | | |
| 0164 241990 | M24x1,5 | 19 | 47 | 16 | 58,5 | 24 |
| 0164 1/21990 | 1/2" BSP | | | | | |

Raccords rallonge Verlängerungstüllen

Matière:

Laiton

Werkstoff:

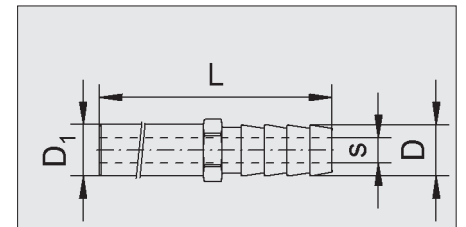
Messing

Exemple de commande:

Bestellbeispiel:

0164 10 120

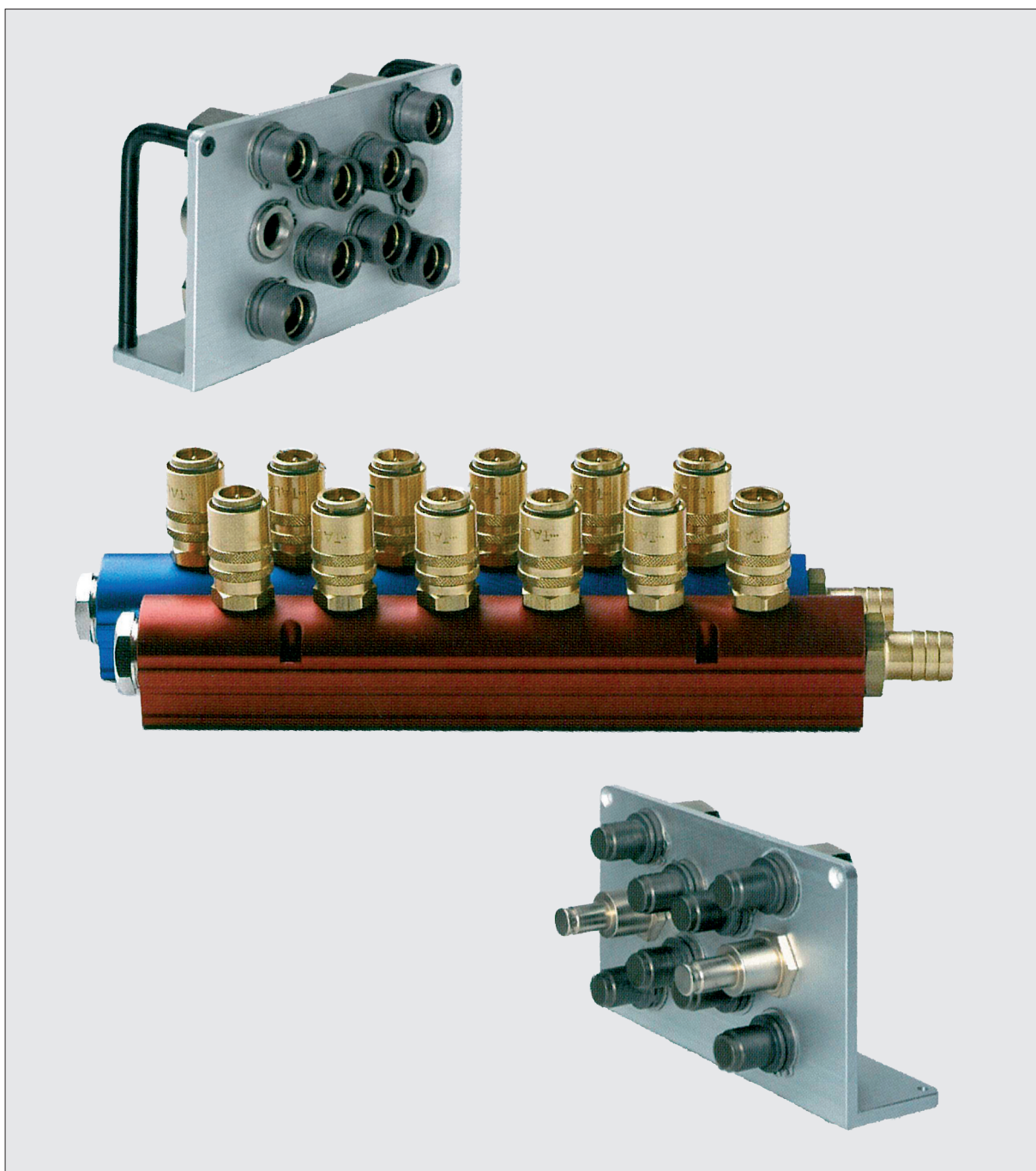
D L



| No d'article Artikelnummer | D | D ₁ | S | L | SW |
|-------------------------------|----|----------------|---|-----|----|
| 0164 10120 | 10 | 10 | 6 | 120 | 11 |
| 0164 10240 | | | 8 | 240 | |
| 0164 10360 | | | | 360 | |
| 0164 13150 | 13 | 14 | 9 | 150 | 15 |
| 0164 13300 | | | | 300 | |
| 0164 13450 | | | | 450 | |

Autres produits accessoires

Weitere Zubehör Produkte



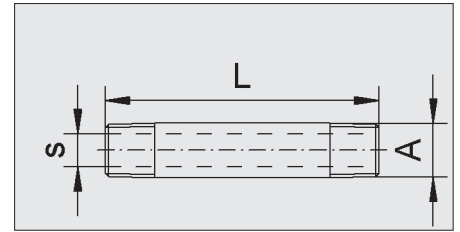
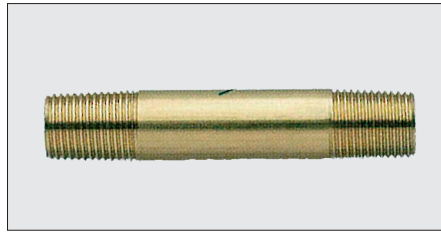
Tubes rallonge Verlängerungsrohre

Matière:
Laiton

Werkstoff:
Messing

Exemple de commande:

Bestellbeispiel:
0165 06 050
d L



| No d'article Artikelnummer | S | A | L |
|-------------------------------|----|-----------|-----|
| 0165 06050 | 6 | 1/8" BSPT | 50 |
| 0165 06100 | | | 100 |
| 0165 06150 | | | 150 |
| 0165 06200 | | | 200 |
| 0165 09050 | 9 | 1/4" BSPT | 50 |
| 0165 09100 | | | 100 |
| 0165 09150 | | | 150 |
| 0165 09200 | | | 200 |
| 0165 12100 | 12 | 3/8" BSPT | 100 |
| 0165 12150 | | | 150 |
| 0165 12200 | | | 200 |

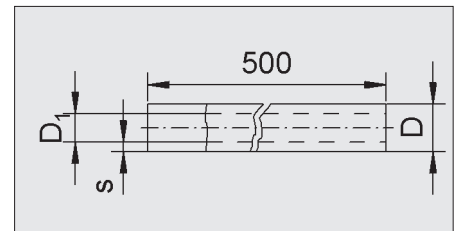
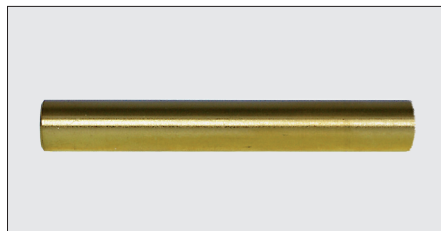
Tubes de laiton Messingrohre

Matière:
Laiton

Werkstoff:
Messing

Exemple de commande:

Bestellbeispiel:
0165 04



| No d'article Artikelnummer | D | D ₁ | s |
|-------------------------------|----|----------------|-----|
| 0165 04 | 4 | 3 | 0,5 |
| 0165 06 | 6 | 5 | |
| 0165 08 | 8 | 6 | 1,0 |
| 0165 10 | 10 | 8 | |
| 0165 12 | 12 | 10 | |
| 0165 14 | 14 | 12 | |

Tuyaux 15 bar max. Schlauch max. 15 bar

Matière: PVC, Insert de tissu de nylon
Material: PVC, Nylon - Gewebeeinlage

Exemple de commande:

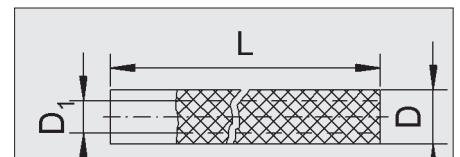
Bestellbeispiel:
0165 TFP 10T



Wasser
Eau



Temperatur max.
Temperatur max.



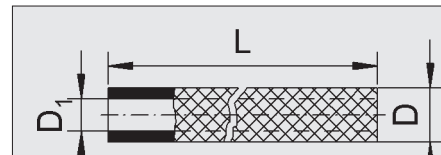
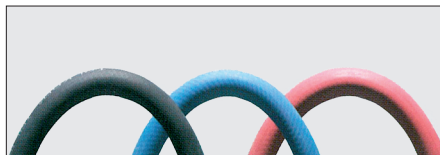
| No d'article Artikelnummer | D ₁ | D | L | Couleur Farbe | Douille de compression Quetschhülse |
|-------------------------------|----------------|----|------|------------------|--|
| 0165 TFP10T | 10 | 16 | 30 m | transparent | 0165 3 TFK1610 |
| 0165 TFP10B | | | | bleu / blau | |
| 0165 TFP10R | | | | rouge / rot | |
| 0165 TFP13T | 13 | 21 | | transparent | 0165 3 TFK1913 |
| 0165 TFP13B | | | | bleu / blau | |
| 0165 TFP13R | | | | rouge / rot | |
| 0165 TFP19T | 19 | 27 | | transparent | 0165 3 TFK2919 |

Haute température - Tuyaux 15 bar max.

Hochtemperatur – Schläuche bis max. 15 bar

Matière: EPDM
Material: EPDM

Exemple de commande:
Bestellbeispiel:
01652 TFW 10B



Wasser
Eau

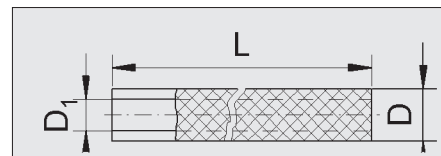
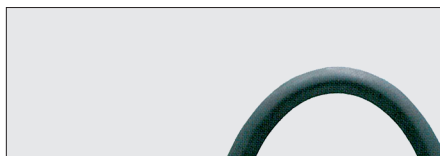


Température max.
Temperatur max.

| No d'article Artikelnummer | D ₁ | D | L | Couleur Farbe | Ref.TFK |
|-------------------------------|----------------|------|------|------------------|---------------|
| 01652 TFW10B | 10 | 17,5 | 50 m | bleu / blau | 01653 TFK1810 |
| 01652 TFW10R | | | | rouge / rot | |
| 01652 TFW10S | | | | noir / schwarz | |
| 01652 TFW13B | 13 | 21 | | bleu / blau | 01653 TFK2313 |
| 01652 TFW13R | | | | rouge / rot | |
| 01652 TFW13S | | | | noir / schwarz | |
| 01652 TFW19S | 19 | 27 | 30m | | 01653 TFK2919 |

Matière: NBR
Material: NBR

Exemple de commande:
Bestellbeispiel:
01652 TFO10S



Oel
Huile

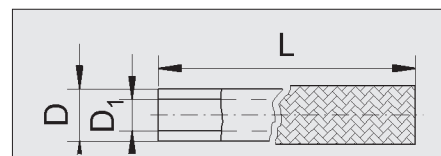
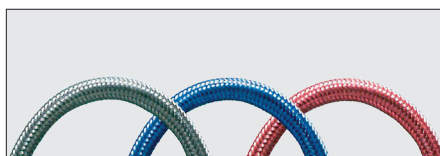


Température max.
Temperatur max.

| No d'article Artikelnummer | D ₁ | D | L | Couleur Farbe | Ref.TFK |
|-------------------------------|----------------|------|------|------------------|---------------|
| 01652 TFO10S | 10 | 17,5 | 50 m | noir / schwarz | 01653 TFK1810 |
| 01652 TFO13S | 13 | 21 | | | 01653 TFK2313 |

Matière: SILICONE
Material: SILICONE

Exemple de commande:
Bestellbeispiel:
01652 TFS10



Wasser
Eau

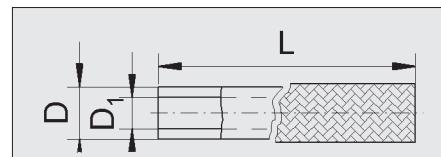
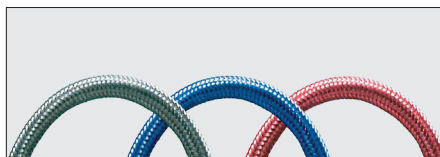


Température max.
Temperatur max.

| No d'article Artikelnummer | D ₁ | D | L | Couleur Farbe | Ref.TFK |
|-------------------------------|----------------|----|------|------------------|---------------|
| 01652 TFS10 | 10 | 15 | 25 m | gris / grau | 01653 TFK1510 |
| 01652 TFS10B | | | | bleu / blau | |
| 01652 TFS10R | | | | rouge / rot | |
| 01652 TFS13 | 13 | 19 | | gris / grau | 01653 TFK1913 |
| 01652 TFS13B | | | | bleu / blau | |
| 01652 TFS13R | | | | rouge / rot | |

Matière: FKM
Material: FKM

Exemple de commande:
Bestellbeispiel:
01652 TFKM10



Wasser
Eau



Oel
Huile



Température max.
Temperatur max.

| No d'article Artikelnummer | D ₁ | D | L | Couleur Farbe | Ref.TFK |
|-------------------------------|----------------|----|------|------------------|---------------|
| 01652 TFKM10 | 10 | 15 | 25 m | gris / grau | 01653 TFK1510 |
| 01652 TFKM10B | | | | bleu / blau | |
| 01652 TFKM10R | | | | rouge / rot | |
| 01652 TFKM13 | 13 | 19 | | gris / grau | 01653 TFK1913 |
| 01652 TFKM13B | | | | bleu / blau | |
| 01652 TFKM13R | | | | rouge / rot | |

Presses & douilles de compression pour l'assemblage de tuyaux

Presse & Quetschhülse für die Schlauchmontage

Exemple de commande:

Bestellbeispiel:

Douille de compression INOX

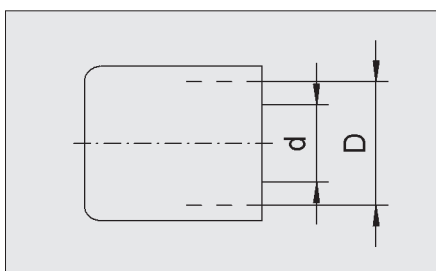
Quetschhülse

01653 TFK 1510



Presse

01653 TFP 100



| No d'article Artikelnummer | D | d | VPE |
|-------------------------------|----|----|-----|
| 01653 TFK1510 | 15 | 10 | 100 |
| 01653 TFK1610 | 16 | | |
| 01653 TFK1810 | 18 | | |
| 01653 TFK1913 | 19 | 13 | |
| 01653 TFK2013 | 20 | | |
| 01653 TFK2313 | 23 | | |
| 01653 TFK2919 | 29 | 19 | |

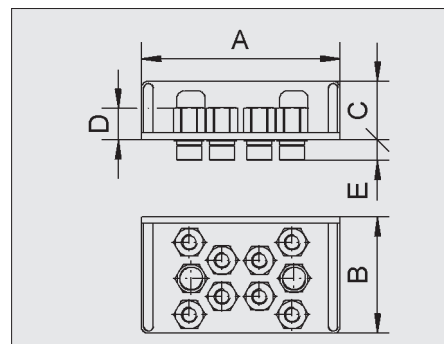
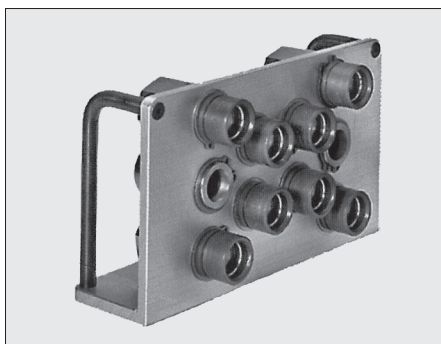
Raccords multiples W Multikupplung W

Exemple de commande:

Bestellbeispiel:

01653 TMM8KI 1/2V avec soupape
mit Ventil

01653 TMM8KI 1/2 sans soupape
ohne Ventil



| No d'article Artikelnummer $\langle \sigma / \vee \rangle$ | No d'article Artikelnummer $\langle \text{---} \rangle$ | Connection Anschluss | A | B | C | D | E | VPE |
|---|--|-------------------------|-----|-----|----|----|----|-----|
| 01653 TMM8KI1/2V | 01653 TMM8KI1/2 | G 1/2 | 170 | 100 | 50 | 30 | 18 | 1 |
| 01653 TMM8KS10V | 01653 TMM8KS10 | 9 mm | | | | 36 | | |
| 01653 TMM8KS13V | 01653 TMM8KS13 | 13 mm | | | | 44 | | |

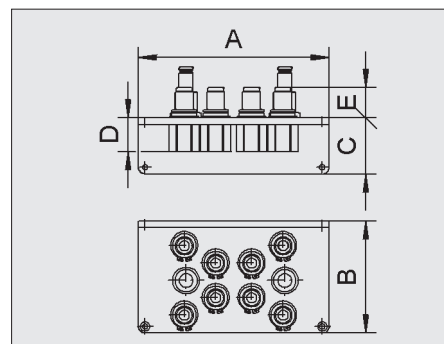
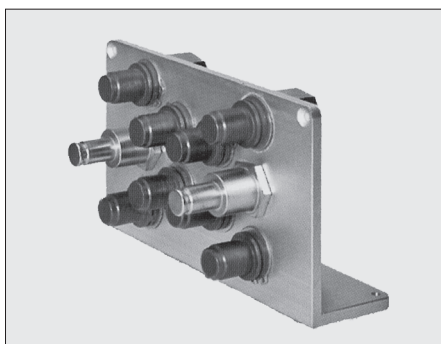
Raccords multiples M Multikupplung M

Bestellbeispiel:

Exemple de commande:

01653 TMM8NI1/2V avec soupape
mit Ventil

01653 TMM8NI 1/2 sans soupape
ohne Ventil



| No d'article Artikelnummer $\langle \sigma / \vee \rangle$ | No d'article Artikelnummer $\langle \text{---} \rangle$ | Connection Anschluss | A | B | C | D | E | VPE |
|---|--|-------------------------|-----|-----|----|----|----|-----|
| 01653 TMM8NI1/2V | 01653 TMM8NI1/2 | G 1/2 | 170 | 100 | 50 | 30 | 27 | 1 |
| 01653 TMM8NS10V | 01653 TMM8NS10 | 9 mm | | | | 36 | | |
| 01653 TMM8NS13V | 01653 TMM8NS13 | 13 mm | | | | 44 | | |

Colliers de serrage

Schlauchschele

Exemple de commande:

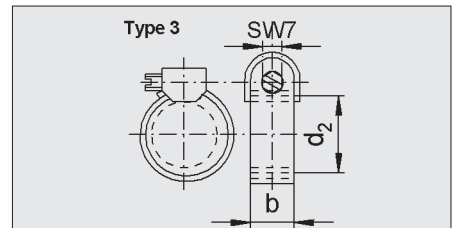
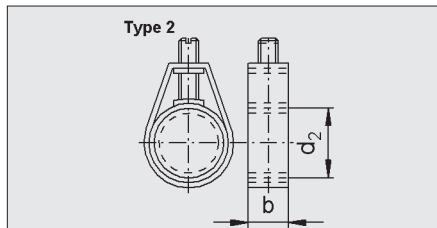
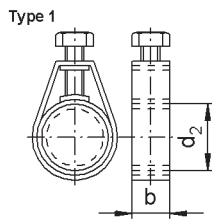
Bestellbeispiel:

0166 1 0712

Type d₂

Matière: Acier inox (CrNi)

Werkstoff: Stahl (CrNi)



| No d'article Artikelnummer | d ₂ | b |
|-------------------------------|----------------|----|
| 0166 1 0712 | 7 - 12 | 10 |
| 0166 1 0914 | 9 - 14 | 11 |
| 0166 1 1015 | 10 - 15 | |
| 0166 1 1217 | 12 - 17 | |
| 0166 1 1419 | 14 - 19 | |
| 0166 1 1621 | 16 - 21 | |
| 0166 1 1722 | 17 - 22 | |
| 0166 1 2025 | 20 - 25 | |

| No d'article Artikelnummer | d ₂ | b |
|-------------------------------|----------------|----|
| 0166 2 0712 | 7 - 12 | 10 |
| 0166 2 0914 | 9 - 14 | 11 |
| 0166 2 1015 | 10 - 15 | |
| 0166 2 1217 | 12 - 17 | |
| 0166 2 1419 | 14 - 19 | |
| 0166 2 1621 | 16 - 21 | |
| 0166 2 1722 | 17 - 22 | |
| 0166 2 2025 | 20 - 25 | |

| No d'article Artikelnummer | d ₂ | b |
|-------------------------------|----------------|---|
| 0166 3 0816 | 8 - 16 | 9 |
| 0166 3 1222 | 12 - 22 | |
| 0166 3 1627 | 16 - 27 | |
| 0166 3 2032 | 20 - 32 | |
| 0166 3 2540 | 25 - 40 | |
| 0166 3 3045 | 30 - 45 | |
| 0166 3 3250 | 32 - 50 | |
| 0166 3 4060 | 40 - 60 | |
| 0166 3 5070 | 50 - 70 | |
| 0166 3 6080 | 60 - 80 | |

Bouchons étanches

Expander 700

Dichtstopfen

Expander 700

Matière:

Douille 1.4305

Bille 100 CR 6

Werkstoff:

Hülse 1.4305

Kugel 100 CR 6

Exemple de commande:

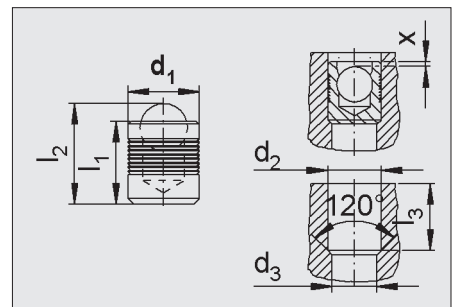
Bestellbeispiel:

0166 303

Pour le bouterolle de pose

Für den Setzstempel

0166 303 A



| No d'article Artikelnummer | d ₁ | l ₁ | l ₂ | d ₂ +0,1 | d ₃ max. | l ₃ min. | X ±0,2 |
|-------------------------------|----------------|----------------|----------------|------------------------|------------------------|------------------------|-----------|
| 0166 303 | 3,0 | 3,6 | 4,6 | 3,0 | 2,2 | 3,4 | 0,4 |
| 0166 304 | 4,0 | 4,0 | 5,2 | 4,0 | 3,3 | 3,8 | 0,2 |
| 0166 305 | 5,0 | 5,5 | 7,0 | 5,0 | 4,3 | 5,3 | 0,4 |
| 0166 306 | 6,0 | 6,5 | 8,6 | 6,0 | 5,3 | 6,3 | 0,3 |
| 0166 307 | 7,0 | 7,5 | 10,1 | 7,0 | 6,4 | 7,3 | |
| 0166 308 | 8,0 | 8,5 | 11,7 | 8,0 | 7,4 | 8,3 | |
| 0166 309 | 9,0 | 10,0 | 13,7 | 9,0 | 8,4 | 9,8 | |
| 0166 310 | 10,0 | 11,0 | 15,2 | 10,0 | 9,4 | 10,8 | 0,4 |
| 0166 312 | 12,0 | 13,0 | 18,0 | 12,0 | 10,6 | 12,8 | |
| 0166 314 | 14,0 | 15,0 | 20,8 | 14,0 | 12,7 | 14,5 | |
| 0166 316 | 16,0 | 17,0 | 23,7 | 16,0 | 14,7 | 16,5 | |
| 0166 318 | 18,0 | 19,0 | 26,3 | 18,0 | 16,7 | 18,5 | 0,6 |
| 0166 320 | 20,0 | 22,0 | 30,5 | 20,0 | 18,7 | 21,5 | |
| 0166 322 | 22,0 | 25,0 | 34,2 | 22,0 | 20,7 | 24,5 | |

Bouchons

228

Verschlussstopfen

228

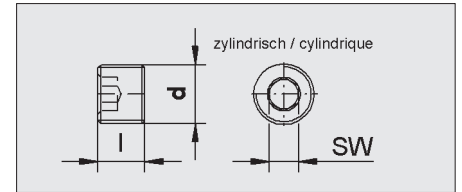
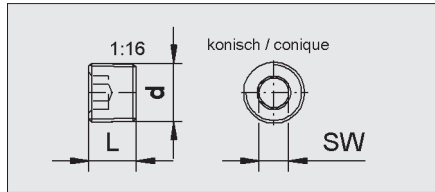
Matière: Laiton, * = nickelé

Werkstoff: Messing, * = vernickelt

Exemple de commande:

Bestellbeispiel:

0167 108



| No d'article Artikelnummern | d | SW | l |
|--------------------------------|-------------------|----|----|
| 0167 108 | M 8 x 0,75 | 4 | 8 |
| 0167 110 | M10 x 1 | 5 | |
| 0167 112 | M12 x 1,5 | 6 | |
| 0167 114 | M14 x 1,5 | 7 | 10 |
| 0167 11 / 8 | * R 1/8" | 5 | 8 |
| 0167 11 / 4 | * R 1/4" | 7 | 10 |
| 0167 13 / 8 | * R 3/8" | 8 | |
| 0167 11 / 2 | * R 1/2" | 10 | |

| No d'article Artikelnummern | d | SW | l |
|--------------------------------|-------------------|----|----|
| 0167 108 Z | M 8 x 0,75 | 4 | 8 |
| 0167 110 Z | M10 x 1 | 5 | |
| 0167 112 Z | M12 x 1,5 | 6 | |
| 0167 114 Z | M14 x 1,5 | 7 | 10 |
| 0167 11 / 8 Z | R 1/8" | 5 | 8 |
| 0167 11 / 4 Z | R 1/4" | 7 | 10 |
| 0167 13 / 8 Z | R 3/8" | 8 | |
| 0167 11 / 2 Z | R 1/2" | 10 | |

Bouchons

Verschlussstopfen

Matière:

Laiton, inox

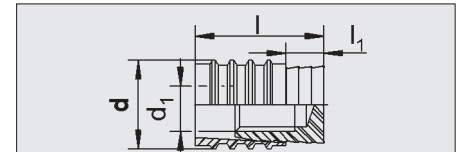
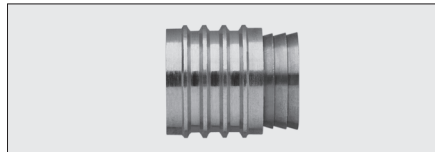
Werkstoff:

Messing, inox

Exemple de commande:

Bestellbeispiel:

0167 3T



| No d'article Artikelnummer | d | d ₁ | l | l ₁ |
|-------------------------------|-----------|----------------|------|----------------|
| 0167 3T 06 | 6 | M3 | 11,5 | 3,5 |
| 0167 3T 08 | 8 | M4 | | |
| 0167 3T 10 | 10 | M6 | 14 | 4 |
| 0167 3T 12 | 12 | | | |
| 0167 3T 16 | 16 | M8 | 16 | |

Bouchons

Verschlussstopfen

Matière:

Laiton, Viton®

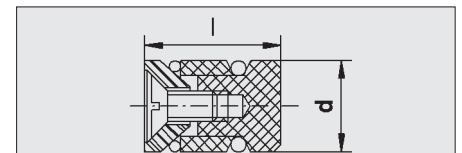
Werkstoff:

Messing, Viton®

Exemple de commande:

Bestellbeispiel:

0167 406



| No d'article Artikelnummer | d | l |
|-------------------------------|-----------|----|
| 0167 406 | 6 | 10 |
| 0167 407 | 7 | |
| 0167 408 | 8 | |
| 0167 410 | 10 | |

| No d'article Artikelnummer | d | l |
|-------------------------------|-----------|----|
| 0167 412 | 12 | 10 |
| 0167 414 | 14 | 12 |
| 0167 416 | 16 | |

Bouchons

228

Verschlussstopfen

228

Matière:

Laiton, Cuivre, * = nickelé

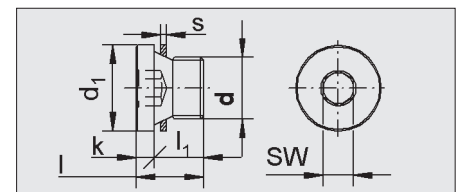
Werkstoff:

Messing, Kupfer, * = vernickelt

Exemple de commande:

Bestellbeispiel:

0167 210



| No d'article Artikelnummer | d | SW | k | s | l ₁ | l | d ₂ |
|-------------------------------|------------------|----|---|---|----------------|----|----------------|
| 0167 210 | M10 x 1 | 5 | 3 | 1 | 8 | 11 | 14 |
| 0167 212 | M12 x 1,5 | 6 | | | 12 | 15 | 17 |
| 0167 214 | M14 x 1,5 | | | | | | 19 |

| No d'article Artikelnummer | d | SW | k | s | l ₁ | l | d ₂ |
|-------------------------------|-----------------|----|---|---|----------------|----|----------------|
| 0167 21 / 8 | * R 1/8" | 5 | 3 | 1 | 8 | 11 | 14 |
| 0167 21 / 4 | * R 1/4" | 6 | | | 12 | 15 | 18 |
| 0167 23 / 8 | * R 3/8" | 8 | | | | | 22 |
| 0167 21 / 2 | * R 1/2" | 10 | 4 | | 14 | 18 | 26 |

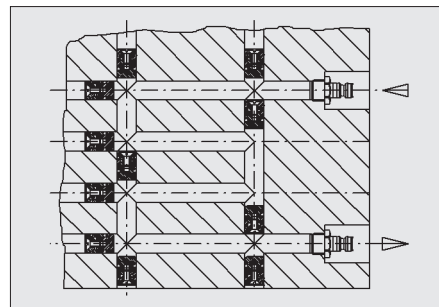
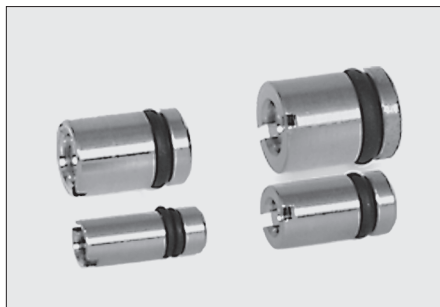
Bouchons de déviation

Umlenkstopfen

Matière:
Laiton, Viton®

Werkstoff:
Messing, Viton®

Exemple de commande:
Bestellbeispiel:
0168 06



| No d'article Artikelnummer | Pour alésage Für Bohrung Ø mm | l |
|-------------------------------|-------------------------------------|----|
| 0168 06 | 6 | 15 |
| 0168 08 | 8 | |

| No d'article Artikelnummer | Pour alésage Für Bohrung Ø mm | l |
|-------------------------------|-------------------------------------|----|
| 016810 | 10 | 15 |
| 016812 | 12 | |

Éléments de déviation

Umlenkstege

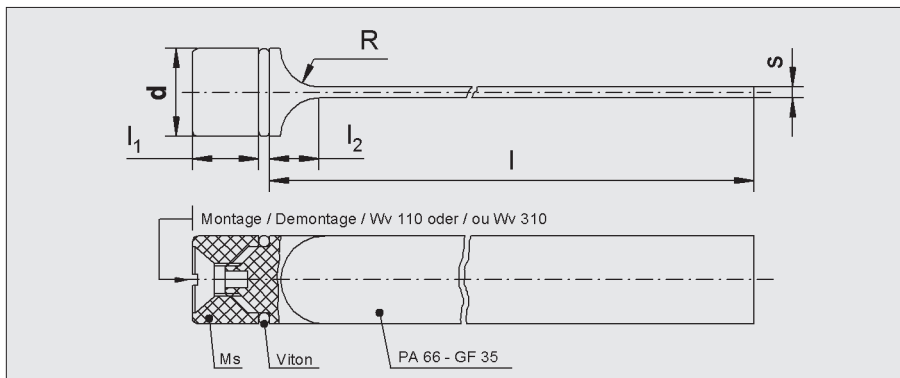
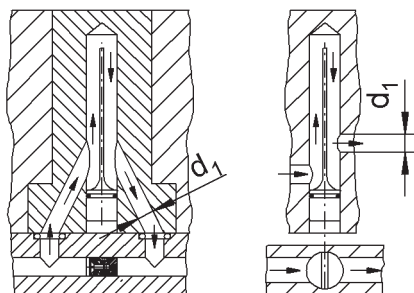
Matière:
Laiton, Viton®, PA 66 - GF 35

Werkstoff:
Messing, Viton®, PA 66 - GF 35

T max: 200°C

Exemple de commande:
Bestellbeispiel:
0168 06200

Exemple d'utilisation
Anwendungsbeispiel



| No d'article Artikelnummer | d | l | l ₁ | l ₂ | R | s | d ₁ Recommandé Empfohlen |
|-------------------------------|----|-----|----------------|----------------|-----|-----|---|
| 0168 06200 | 6 | 200 | 6 | 3,5 | 2,4 | 1 | 4 |
| 0168 08200 | 8 | | | 4,5 | 3,4 | | 5 |
| 0168 10200 | 10 | | 7 | 5 | 3,5 | 1,5 | 6 |
| 0168 12200 | 12 | | 9 | 6 | 4,5 | | 8 |
| 0168 14200 | 14 | | 10,5 | 7,5 | 5,5 | 10 | |

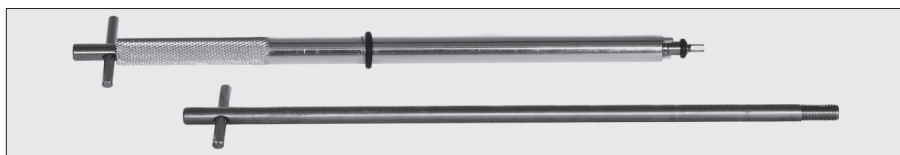
Clefs de montage

Montageschlüsseln inkl. Zugstange

Matière:
Acier à outils

Werkstoff:
Werkzeugstahl

Exemple de commande:
Bestellbeispiel:
0168 15006



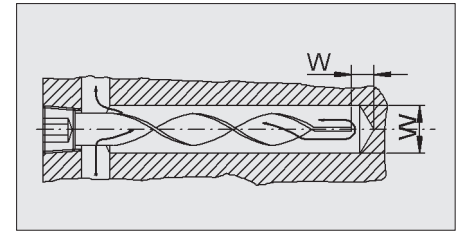
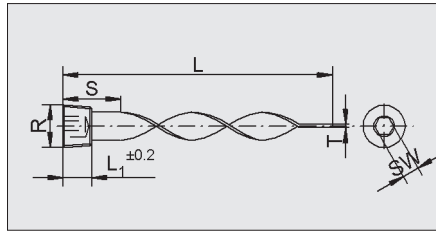
| No d'article Artikelnummer | | | Pour bouchon et nerve Für Stopfen und Steg | No d'article Artikelnummer | | Pour bouchon et nerve Für Stopfen und Steg |
|-------------------------------|------------|--|---|-------------------------------|------------|---|
| 150 mm | 300 mm | | mm | 150 mm | 300 mm | mm |
| 0168 15006 | 0168 30006 | | 6 | 0168 15010 | 0168 30010 | 10 |
| 0168 15008 | 0168 30008 | | 8 | 0168 15012 | 0168 30012 | 12 + 14 |

Eléments de déviation hélicoïdaux Umlenkstege gedreht

Matière:
Laiton

Werkstoff:
Messing

Exemple de commande:
Bestellbeispiel:
0168 11 1/8 101



| No d'article Artikelnummer | B | R | L ₁ | L | S | SW | T | W | No d'article Artikelnummer | B | R | L ₁ | L | S | SW | T | W |
|-------------------------------|------|------|----------------|-----|-----|----|-----|------|-------------------------------|------|------|----------------|-----|-----|----|-----|------|
| 0168 11 1/8 101 | 8.5 | 3/8" | 8 | 101 | 51 | 5 | 1.6 | 8.8 | 0168 11 1/2 203 | 18,5 | 1/2" | 10 | 203 | 76 | 10 | 2,4 | 18.8 |
| 0168 11 1/8 203 | | | | 203 | 102 | | | | 0168 11 1/2 406 | | | | 406 | 127 | | | |
| 0168 11 1/4 127 | 11.5 | 1/4" | 10 | 127 | 51 | 7 | 2.4 | 11.8 | 0168 11 3/4 305 | 23,5 | 3/4" | 12 | 305 | 102 | 12 | 3.2 | 23.8 |
| 0168 11 1/4 254 | | | | 254 | 102 | | | | 0168 11 3/4 508 | | | | 508 | 153 | | | |
| 0168 11 3/8 152 | 15 | 3/8" | | 152 | 51 | 8 | | 15.3 | 0168 11 1/1 406 | 28,5 | 1" | | 406 | 127 | | | 28.8 |
| 0168 11 3/8 305 | | | | 305 | 102 | | | | | | | | | | | | |

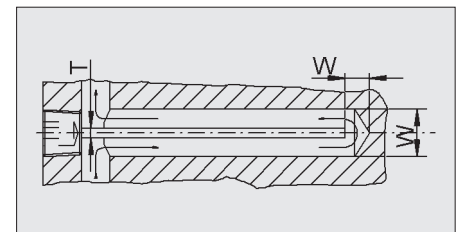
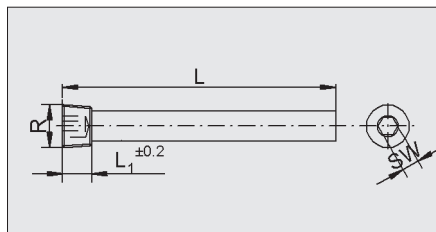
Eléments de déviation droits avec bouchon en pouces Umlenkstege gerade

mit zölligem Verschlussstopfen

Matière:
Laiton

Werkstoff:
Messing

Exemple de commande:
Bestellbeispiel:
0168 12 1/8 100



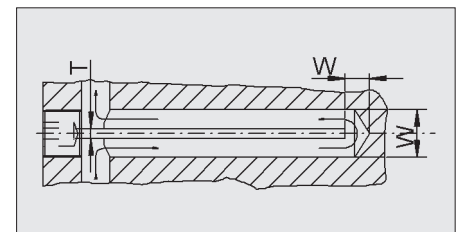
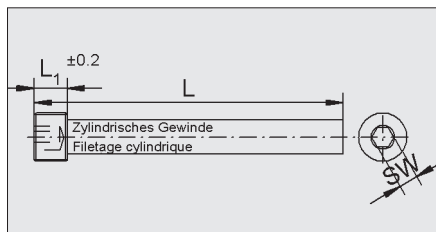
| No d'article Artikelnummer | B | R | L ₁ | L | SW | T | W | No d'article Artikelnummer | B | R | L ₁ | L | SW | T | W |
|-------------------------------|------|------|----------------|-----|----|-----|------|-------------------------------|------|------|----------------|-----|----|-----|------|
| 0168 12 1/8 100 | 8.2 | 1/8" | 8 | 100 | 5 | 2.0 | 8.5 | 0168 12 1/2 200 | 18.2 | 1/2" | 10 | 200 | 10 | 2.5 | 18.5 |
| 0168 12 1/8 200 | | | | 200 | | | | 0168 12 1/2 400 | | | | 400 | | | |
| 0168 12 1/4 125 | 11.2 | 1/4" | 10 | 125 | 7 | 2.5 | 11.5 | 0168 12 3/4 300 | 23.2 | 3/4" | 12 | 300 | 12 | 3.0 | 23.5 |
| 0168 12 1/4 250 | | | | 250 | | | | 0168 12 3/4 500 | | | | 500 | | | |
| 0168 12 3/8 150 | 14.7 | 3/8" | | 150 | 8 | | 15 | | | | | | | | |
| 0168 12 3/8 300 | | | | 300 | | | | | | | | | | | |

Eléments de déviation droits avec bouchon métrique Umlenkstege gerade mit metrischem Verschlussstopfen

Matière:
Laiton

Werkstoff:
Messing

Exemple de commande:
Bestellbeispiel:
0168 13 080100



| No d'article Artikelnummer | B | R | L ₁ | L | S | T | W | No d'article Artikelnummer | B | R | L ₁ | L | S | T | W |
|-------------------------------|----|---------|----------------|-----|---|-----|----|-------------------------------|----|---------|----------------|-----|----|-----|----|
| 0168 13 080100 | 6 | M8x0,75 | 8 | 100 | 4 | 1.6 | 6 | 0168 13 160150 | 14 | M16x1,5 | 10 | 150 | 8 | 2.4 | 14 |
| 0168 13 080200 | | | | 200 | | | | 0168 13 160300 | | | | 300 | | | |
| 0168 13 100100 | 8 | M10x1 | | 100 | 5 | | 8 | 0168 13 180150 | 16 | M18x1,5 | | 150 | | | 16 |
| 0168 13 100200 | | | | 200 | | | | 0168 13 180300 | | | | 300 | | | |
| 0168 13 120125 | 10 | M12x1,5 | | 125 | 6 | 2.4 | 10 | 0168 13 200150 | 18 | M20x1,5 | | 150 | 10 | | 18 |
| 0168 13 120250 | | | | 250 | | | | 0168 13 200300 | | | | 300 | | | |
| 0168 13 140150 | 12 | M14x1,5 | 10 | 150 | | | 12 | 0168 13 240150 | 20 | M24x2 | 12 | 150 | 12 | 3.2 | 20 |
| 0168 13 140300 | | | | 300 | | | | 0168 13 240300 | | | | 300 | | | |

Éléments de déviation Umlenkstege

Matière:
Plastique à haute résistance thermique
Joint torique Viton -10°C à 200°C

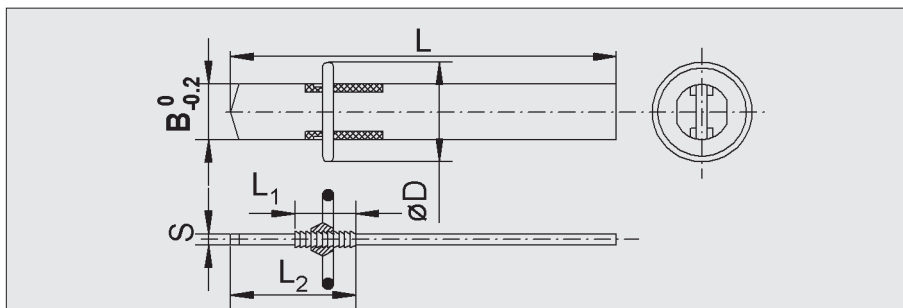
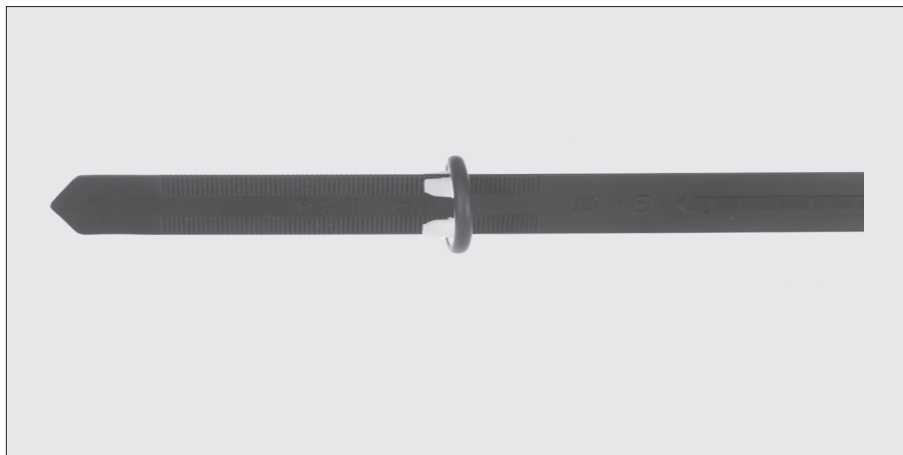
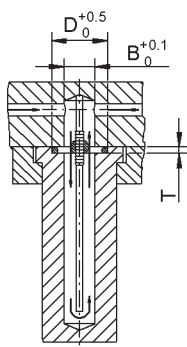
Werkstoff:
Hochtemperaturbeständiger Kunststoff
O-Ring Viton -10°C bis 200°C

Exemple de commande:

Bestellbeispiel:

0168 2 10 200

B L



| No d'article Artikelnummer | B | L | D | L ₁ | L ₂ | S | T |
|-------------------------------|----|-----|----|----------------|----------------|-----|-----|
| 01682 10220 | 10 | 220 | 17 | 55 | 45 | 1.5 | 2.0 |
| 01682 15300 | 15 | 300 | 22 | 70 | 55 | 1.8 | |

| No d'article Artikelnummer | B | L | D | L ₁ | L ₂ | S | T |
|-------------------------------|----|-----|----|----------------|----------------|-----|-----|
| 01682 20350 | 20 | 350 | 28 | 90 | 70 | 2.0 | 2.4 |
| 01682 25380 | 25 | 380 | 33 | 115 | 90 | | |

Éléments de déviation Umlenkstege

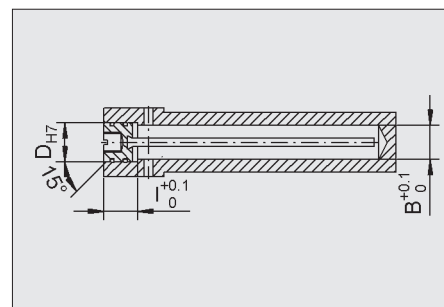
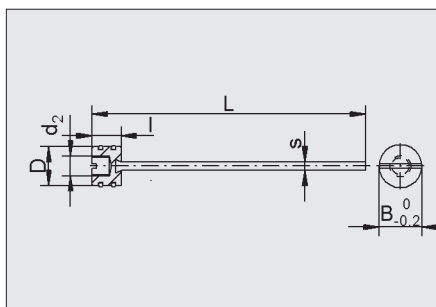
Matière:
Plastique à haute résistance thermique
Joint torique Viton -10°C à 200°C

Werkstoff:
Hochtemperaturbeständiger Kunststoff
O-Ring Viton -10°C bis 200°C

Exemple de commande:

Bestellbeispiel:

0168 2 10 180



| No d'article Artikelnummer | B | L | D | D ₁ | d ₂ | I | S |
|-------------------------------|----|-----|------|----------------|----------------|----|---|
| 01682 10180 | 10 | 180 | 11,7 | 12 | M6 | 13 | 2 |
| 01682 15250 | 15 | 250 | 15,7 | 16 | M8 | 16 | |

| No d'article Artikelnummer | B | L | D | D ₁ | d ₂ | I | S |
|-------------------------------|----|-----|------|----------------|----------------|----|---|
| 01682 20300 | 20 | 300 | 21,7 | 22 | M12 | 20 | 2 |
| 01682 25390 | 25 | 390 | 25,7 | 26 | M16 | 22 | |

Éléments de refroidissement

Kernkühlelemente

Matière:

MS58 Laiton

Werkstoff:

MS58 Messing

Température max.: 135°C

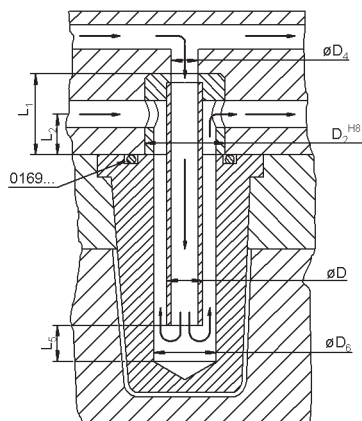
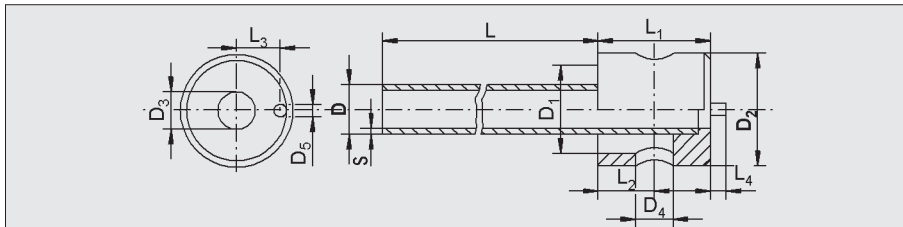
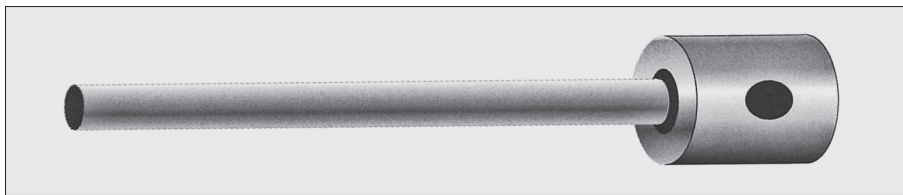
Max. Temperatur: 135°C

Exemple de commande:

Bestellbeispiel:

01683 10 026 100

D₂ D L



| No d'article Artikelnummer | D ₂ | D | L | L ₁ | L ₂ | L ₃ | L ₄ | L ₅ | D ₁ | D ₃ | D ₄ | D ₅ | S | D ₆ |
|-------------------------------|----------------|-----|-----|----------------|----------------|----------------|----------------|----------------|----------------|----------------|----------------|----------------|-----|----------------|
| 01683 10026100 | 10 | 2.6 | 100 | 16 | 9 | 3.5 | 2.5 | 3 | 4 | 2 | 4 | 2 | 0.3 | 3-4 |
| 01683 10026200 | | | 200 | | | | | | | | | | | 4-5 |
| 01683 10030100 | 10 | 3 | 100 | 16 | 9 | 3.5 | 2.5 | 4 | 5 | 2.4 | 4 | 2 | 0.3 | 4-5 |
| 01683 10030200 | | | 200 | | | | | | | | | | | 4-5 |
| 01683 10040100 | 10 | 4 | 100 | 16 | 9 | 3.5 | 2.5 | 5 | 6 | 3 | 4 | 2 | 0.5 | 5-6 |
| 01683 10040200 | | | 200 | | | | | | | | | | | 5-6 |
| 01683 12050160 | 12 | 5 | 160 | 18 | | 4.5 | | 6 | 8 | 4 | 6 | | | 6-8 |
| 01683 12050315 | | | 315 | | | | | | | | | | | 6-8 |
| 01683 16060160 | 16 | 6 | 160 | 18 | | 6 | | 8 | 12 | 5 | | | | 8-12 |
| 01683 16060315 | | | 315 | | | | | | | | | | | 8-12 |
| 01683 18080160 | 18 | 8 | 160 | 20 | 10 | 7 | | 10 | 14 | 6 | | | 1 | 12-14 |
| 01683 18080315 | | | 315 | | | | | | | | | | | 12-14 |
| 01683 20100160 | 20 | 10 | 160 | 20 | 10 | 8 | | 12 | 16 | 8 | 8 | | | 14-16 |
| 01683 20100315 | | | 315 | | | | | | | | | | | 14-16 |
| 01683 25120160 | 25 | 12 | 160 | 25 | 13 | 9.5 | 3 | 16 | 20 | 10 | 10 | 3 | | 16-20 |
| 01683 25120315 | | | 315 | | | | | | | | | | | 16-20 |

Pièces de base TT1 pour l'implantation des turbospirales

Basisstücke TT1 für Turboeinsätze

Matière: PA 6.6

Werkstoff: PA 6.6

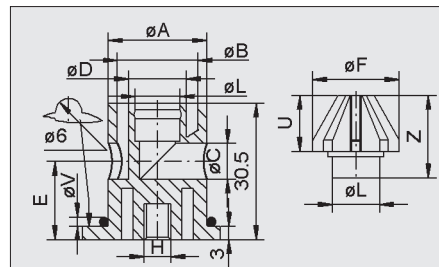
T_{max} : 80°C

Exemple de commande:

Bestellbeispiel:

01684 TT 18 06 23

Type A



| No d'article Artikelnummer | A | B | C | D | E | F | G | H | K | L | M | T | U | V | Z |
|-------------------------------|----|----|----|------|------|----|----|----|-----|----|----|---|------|---|-------|
| 01684 TT180623 | 18 | 14 | 6 | 10 | 18,5 | 14 | 23 | M4 | 4,5 | 7 | 15 | 4 | 11,5 | 2 | 16 |
| 01684 TT220828 | 22 | 18 | 8 | 13 | 17,5 | 18 | 28 | M6 | 5,4 | 10 | 19 | 5 | 12,5 | 3 | 18 |
| 01684 TT261032 | 26 | 22 | 10 | 15 | | 22 | 32 | M8 | | 12 | 23 | 6 | | | |
| 01684 TT301236 | 30 | 25 | 12 | 17,5 | 15,5 | 26 | 36 | | | 14 | 27 | 8 | 14,5 | | 21,75 |

Pièces de base TT2 pour l'implantation des turbospirales

Basisstücke TT2 für Turboeinsätze

Matière: PA 6.6

Werkstoff: PA 6.6

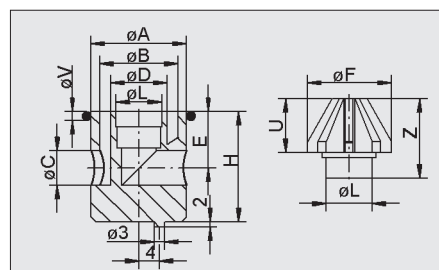
T_{max} : 80°C

Exemple de commande:

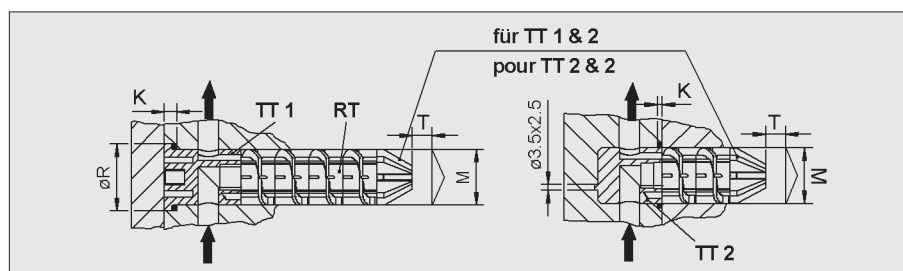
Bestellbeispiel:

01684 TT 18 14 05

Type A



| No d'article Artikelnummer | A | B | C | D | E | G | H | K | L | M | R | T | U | V | Z |
|-------------------------------|----|----|----|------|----|----|----|-----|----|----|----|---|------|---|-------|
| 01684 TT181405 | 18 | 14 | 5 | 10 | 12 | 6 | 22 | 1,5 | 7 | 15 | 23 | 4 | 11,5 | 2 | 16 |
| 01684 TT221808 | 22 | 18 | 8 | 13 | 13 | 8 | 24 | 2,4 | 10 | 19 | 29 | 5 | 12,5 | 3 | 18 |
| 01684 TT262210 | 26 | 22 | 10 | 15,3 | | 10 | | | 12 | 23 | 33 | 6 | | | |
| 01684 TT302612 | 30 | 26 | 12 | 17,6 | 15 | 12 | 26 | | 14 | 27 | 37 | 8 | 14,5 | | 21,75 |



Inserts turbospirales RT Turboeinsätze RT

Matière: PA 6.6

Werkstoff: PA 6.6

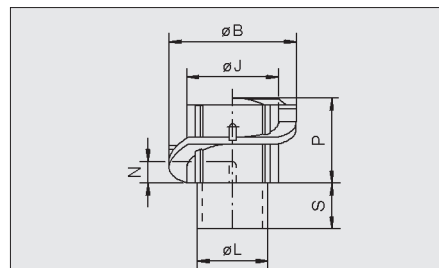
T_{max} : 80°C

Exemple de commande:

Bestellbeispiel:

01684 RT 14 09 10

Type B



| No d'article Artikelnummer | B | J | L | N | P | S |
|-------------------------------|----|----|------|-----|------|-----|
| 01684 RT 140910 | 14 | 10 | 7,0 | 3 | 10,4 | 5,5 |
| 01684 RT 181212 | 18 | 13 | 10,0 | 3,5 | 11 | 6,5 |
| 01684 RT 221412 | 22 | 15 | 12,0 | | 11,2 | |
| 01684 RT 261615 | 26 | 17 | 14,0 | 4 | 13,0 | 8,5 |

Tampons dateurs

Datumsteller

KS, KK, OHV

Matière:

1.2767 trempé 54 HRC +/-2

Werkstoff:

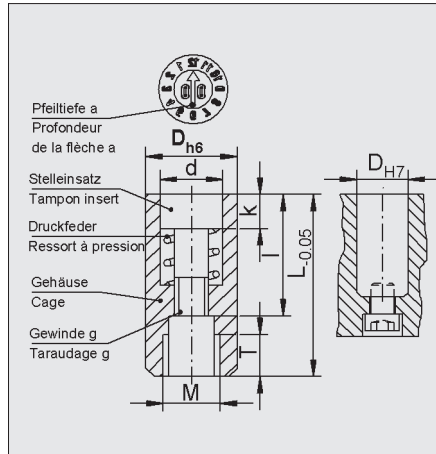
1.2767 gehärtet 54 HRC +/-2

Exemple de commande:

Bestellbeispiel:

0189 KS 03 1-12 11

T GR Gravur + (Jahr / année)



Type KS

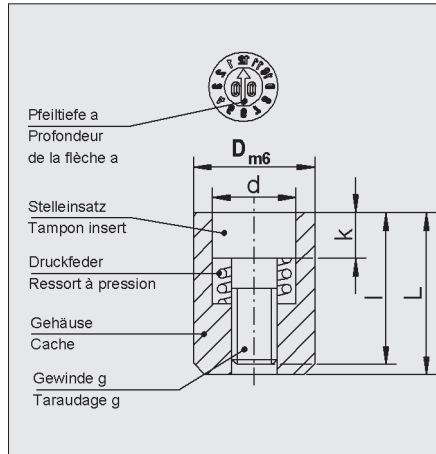
| Dimensions en mm / Masstabelle in mm | | | | | | | | | | |
|--------------------------------------|----|-------|---|---|-----|--------|-----|-----------|-----|--|
| | | Cache | | | | Insert | | | | |
| GR | D | L | M | T | d | k | l | g | a | |
| 03 | 3 | 14 | 2 | 4 | 1,6 | 2 | 9 | M1x0,25 | 0,3 | |
| 04 | 4 | | | | 2 | 2,5 | 2,3 | M1,4x0,2 | | |
| 05 | 5 | 17 | 3 | 3 | 3,1 | 2,8 | 13 | M1,6x0,2 | 0,4 | |
| 06 | 6 | | | | | | | | | |
| 08 | 8 | 20 | 4 | 4 | 4,6 | 4 | 14 | M2,5x0,35 | | |
| 10 | 10 | | 5 | | | | | | | |
| 12 | 12 | 25 | 6 | 6 | 6,4 | | 17 | M3x0,5 | 0,6 | |
| 16 | 16 | 33 | 8 | 8 | 8,4 | 5 | 23 | M3,5x0,6 | | |

Exemple de commande:

Bestellbeispiel:

0189 KK 02 1-12 11

T GR Gravur + Jahr / année



Type KK

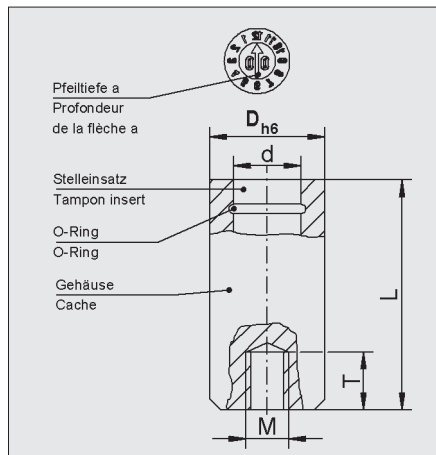
| Dimensions en mm / Masstabelle in mm | | | | | | | | | | |
|--------------------------------------|-----|-------|-----|-----|------|-----------|-----|--|--|--|
| | | Cache | | | | Insert | | | | |
| GR | D | L | d | k | l | g | a | | | |
| 02 | 2,6 | 4 | 1,4 | 0,9 | 3,8 | M0,8x0,2 | 0,3 | | | |
| 03 | 3 | | 1,5 | | | | | | | |
| 04 | 4 | 5 | 2,1 | 1,2 | 4,8 | M1,1x0,25 | | | | |
| 05 | 5 | 8 | 3,1 | 2 | 7,8 | M1,6x0,2 | 0,4 | | | |
| 06 | 6 | | | | | | | | | |
| 08 | 8 | 10 | 4,4 | 2,5 | 9,8 | M2,3x0,25 | | | | |
| 10 | 10 | 12 | 5,2 | 3 | 11,8 | M2,5x0,35 | | | | |
| 12 | 12 | 14 | 6,2 | | 13,8 | M3x0,35 | 0,6 | | | |

Exemple de commande:

Bestellbeispiel:

0189 OHV 05 1-12 11

T GR A Jahr / année



Type OHV

| Dimensions en mm / Masstabelle in mm | | | | | | | |
|--------------------------------------|----|---|----|---|---|-----|--|
| GR | D | d | L | M | T | | |
| 05 | 5 | 3 | 17 | 3 | 3 | 0,4 | |
| 06 | 6 | | | | | | |
| 08 | 8 | 4 | 20 | 4 | 5 | | |
| 10 | 10 | 5 | | 5 | | | |
| 12 | 12 | 6 | 25 | 6 | 6 | 0,6 | |

Tampons dateurs Datumsteller



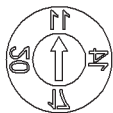
Mois / Monate + Année / Jahr



Mois / Monate



6 Ans / 6 Jahre



12 Ans / 12 Jahre



Semaine
Wochen



Semaine + Année
Wochen + Jahr

Beispiel: 30 + 5 und 11 = KW35/2011
Exemple: 30 + 5 et 11 = Semaine 35/2011



Lettres A - M / Buchstaben A - M



Lettres N - Z / Buchstaben N - Z



Flèche + Année / Pfeil + Jahr

| Marque Anzeige | No d'article Artikelnummer | No d'article Artikelnummer | No d'article Artikelnummer |
|------------------------|-------------------------------|-------------------------------|-------------------------------|
| | Type KS | Type KK | Type OHV |
| Mois + Année | | 0189 KK02 / 1-12 /..(Jahr) | |
| Monat + Jahr | 0189 KS03 / 1-12 / (Jahr) | 0189 KK03 / 1-12/..(Jahr) | |
| | 0189 KS04 / 1-12 / (Jahr) | 0189 KK04 / 1-12/..(Jahr) | |
| | 0189 KS05 / 1-12 / (Jahr) | 0189 KK05 / 1-12/..(Jahr) | 0189 OHV05 / 1-12 /..(Jahr) |
| | 0189 KS06 / 1-12 / (Jahr) | 0189 KK06 / 1-12/..(Jahr) | 0189 OHV06 / 1-12 /..(Jahr) |
| | 0189 KS08 / 1-12 / (Jahr) | 0189 KK08 / 1-12/..(Jahr) | 0189 OHV08 / 1-12 /..(Jahr) |
| | 0189 KS10 / 1-12 / (Jahr) | 0189 KK10 / 1-12/..(Jahr) | 0189 OHV10 / 1-12 /..(Jahr) |
| | 0189 KS12 / 1-12 / (Jahr) | 0189 KK12 / 1-12/..(Jahr) | 0189 OHV12 / 1-12 /..(Jahr) |
| | 0189 KS16 / 1-12 / (Jahr) | | |
| Mois | | 0189 KK02 / 1-12 | |
| Monat | 0189 KS03 / 1-12 | 0189 KK03 / 1-12 | |
| | 0189 KS04 / 1-12 | 0189 KK04 / 1-12 | |
| | 0189 KS05 / 1-12 | 0189 KK05 / 1-12 | 0189 OHV05 / 1-12 |
| | 0189 KS06 / 1-12 | 0189 KK06 / 1-12 | 0189 OHV06 / 1-12 |
| | 0189 KS08 / 1-12 | 0189 KK08 / 1-12 | 0189 OHV08 / 1-12 |
| | 0189 KS10 / 1-12 | 0189 KK10 / 1-12 | 0189 OHV10 / 1-12 |
| | 0189 KS12 / 1-12 | 0189 KK12 / 1-12 | 0189 OHV12 / 1-12 |
| | 0189 KS16 / 1-12 | | |
| 6 années (Année + 5) | | 0189 KK02 / .. (Jahr) +5 | |
| 6 Jahre (Jahr + 5) | 0189 KS03 / .. (Jahr) +5 | 0189 KK03 / .. (Jahr) +5 | |
| | 0189 KS04 / .. (Jahr) +5 | 0189 KK04 / .. (Jahr) +5 | |
| | 0189 KS05 / .. (Jahr) +5 | 0189 KK05 / .. (Jahr) +5 | 0189 OHV05 / ..(Jahr) +5 |
| | 0189 KS06 / .. (Jahr) +5 | 0189 KK06 / .. (Jahr) +5 | 0189 OHV06 / .. (Jahr) +5 |
| | 0189 KS08 / .. (Jahr) +5 | 0189 KK08 / .. (Jahr) +5 | 0189 OHV08 / ..(Jahr) +5 |
| | 0189 KS10 / .. (Jahr) +5 | 0189 KK10 / .. (Jahr) +5 | 0189 OHV10 / ..(Jahr) +5 |
| | 0189 KS12 / .. (Jahr) +5 | 0189 KK12 / .. (Jahr) +5 | 0189 OHV12 / ..(Jahr) +5 |
| | 0189 KS16 / .. (Jahr) +5 | | |
| 12 années (Année + 11) | | 0189 KK02 / .. (Jahr) + 11 | |
| 12 Jahre (Jahr + 11) | 0189 KS03 / .. (Jahr) + 11 | 0189 KK03 / .. (Jahr) + 11 | |
| | 0189 KS04 / .. (Jahr) + 11 | 0189 KK04 / .. (Jahr) + 11 | |
| | 0189 KS05 / .. (Jahr) + 11 | 0189 KK05 / .. (Jahr) + 11 | 0189 OHV05 / .. (Jahr) + 11 |
| | 0189 KS06 / .. (Jahr) + 11 | 0189 KK06 / .. (Jahr) + 11 | 0189 OHV06 / .. (Jahr) + 11 |
| | 0189 KS08 / .. (Jahr) + 11 | 0189 KK08 / .. (Jahr) + 11 | 0189 OHV08 / .. (Jahr) + 11 |
| | 0189 KS10 / .. (Jahr) + 11 | 0189 KK10 / .. (Jahr) + 11 | 0189 OHV10 / .. (Jahr) + 11 |
| | 0189 KS12 / .. (Jahr) + 11 | 0189 KK12 / .. (Jahr) + 11 | 0189 OHV12 / .. (Jahr) + 11 |
| | 0189 KS16 / .. (Jahr) + 11 | | |
| SET1 | | 0189 KK02 /SET1/..(Jahr) | |
| Set Semaine et année | 0189 KS03 / SET1/..(Jahr) | 0189 KK03 /SET1/..(Jahr) | |
| Woche- und Jahres-Set | 0189 KS4 / SET1/..(Jahr) | 0189 KK04 /SET1/..(Jahr) | |
| | 0189 KS05 / SET1/..(Jahr) | 0189 KK05 /SET1/..(Jahr) | 0189 OHV05 /SET1/..(Jahr) |
| | 0189 KS06 / SET1/..(Jahr) | 0189 KK06 /SET1/..(Jahr) | 0189 OHV06 /SET1/..(Jahr) |
| | 0189 KS08 / SET1/..(Jahr) | 0189 KK08 /SET1/..(Jahr) | 0189 OHV08 /SET1/..(Jahr) |
| | 0189 KS10 / SET1/..(Jahr) | 0189 KK10 /SET1/..(Jahr) | 0189 OHV10 /SET1/..(Jahr) |
| | 0189 KS12 / SET1/..(Jahr) | 0189 KK12 /SET1/..(Jahr) | 0189 OHV12 /SET1/..(Jahr) |
| | 0189 KS16 / SET1/..(Jahr) | | |
| Lettres A-M | | 0189 KK02 /A-M | |
| Buchstaben A-M | 0189 KS03 /A-M | 0189 KK03 /A-M | |
| | 0189 KS04 /A-M | 0189 KK04 /A-M | |
| | 0189 KS05 /A-M | 0189 KK05 /A-M | 0189 OHV05 /A-M |
| | 0189 KS06 /A-M | 0189 KK06 /A-M | 0189 OHV06 /A-M |
| | 0189 KS08 /A-M | 0189 KK08 /A-M | 0189 OHV08 /A-M |
| | 0189 KS10 /A-M | 0189 KK10 /A-M | 0189 OHV10 /A-M |
| | 0189 KS12 /A-M | 0189 KK12 /A-M | 0189 OHV12 /A-M |
| | 0189 KS16 /A-M | | |
| Lettres N-Z | | 0189 KK02 /N-Z | |
| Buchstaben N-Z | 0189 KS03 /N-Z | 0189 KK03 /N-Z | |
| | 0189 KS04 /N-Z | 0189 KK04 /N-Z | |
| | 0189 KS05 /N-Z | 0189 KK05 /N-Z | 0189 OHV05 /N-Z |
| | 0189 KS06 /N-Z | 0189 KK06 /N-Z | 0189 OHV06 /N-Z |
| | 0189 KS08 /N-Z | 0189 KK08 /N-Z | 0189 OHV08 /N-Z |
| | 0189 KS10 /N-Z | 0189 KK10 /N-Z | 0189 OHV10 /N-Z |
| | 0189 KS12 /N-Z | 0189 KK12 /N-Z | 0189 OHV12 /N-Z |
| | 0189 KS16 /N-Z | | |
| Flèche et l'année | | 0189 EK02 /..(Jahr) | |
| Jahr und Pfeil | 0189 ES03 /..(Jahr) | 0189 EK03 /..(Jahr) | |
| | 0189 ES04 /..(Jahr) | 0189 EK04 /..(Jahr) | |
| | 0189 ES05 /..(Jahr) | 0189 EK05 /..(Jahr) | 0189 OHVE05 /..(Jahr) |
| | 0189 ES06 /..(Jahr) | 0189 EK06 /..(Jahr) | 0189 OHVE06 /..(Jahr) |
| | 0189 ES08 /..(Jahr) | 0189 EK08 /..(Jahr) | 0189 OHVE08 /..(Jahr) |
| | 0189 ES10 /..(Jahr) | 0189 EK10 /..(Jahr) | 0189 OHVE10 /..(Jahr) |
| | 0189 ES12 /..(Jahr) | 0189 EK12 /..(Jahr) | 0189 OHVE12 /..(Jahr) |
| | 0189 ES16 /..(Jahr) | | |

Inserts symbole de recyclage

Recycling-Einsätze

DIN 6120

Type X

Avec symbole pour le recyclage DIN 30600

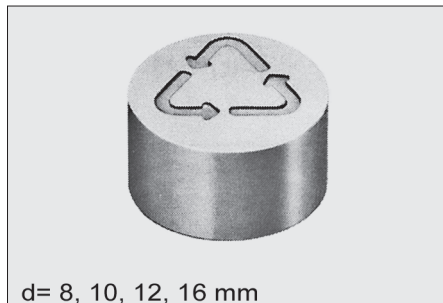
Mit Symbol Recycling DIN 30600

Exemple de commande:

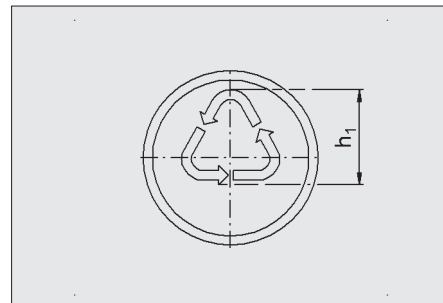
Bestellbeispiel:

0190 X 08

Type d



d= 8, 10, 12, 16 mm



Type Y

Avec symbole pour le recyclage DIN 30600 et
marquage selon DIN 7728

Mit Symbol Recycling DIN 30600 und
Kennzeichen nach DIN 7728

Exemple de commande:

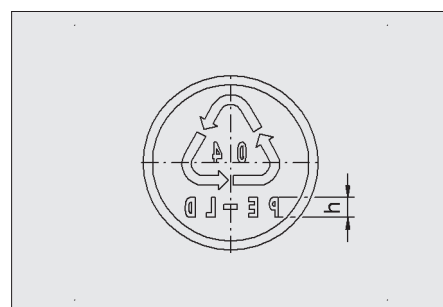
Bestellbeispiel:

0190 Y 08 01

Type d code



d= 8, 10, 12, 16 mm



| Code | 01 | 02 | 03 | 04 | 05 | 06 |
|---|-----|-------|-----|-------|----|----|
| Type de matière plastique / Kunststoffart | PET | PE-HD | PVC | PE-LD | PP | PS |

Type Z

Avec symbole pour le recyclage DIN 30600 et
marquage selon votre demande

Mit Symbol Recycling DIN 30600 und
Kennzeichen nach Ihren Angaben

Exemple de commande:

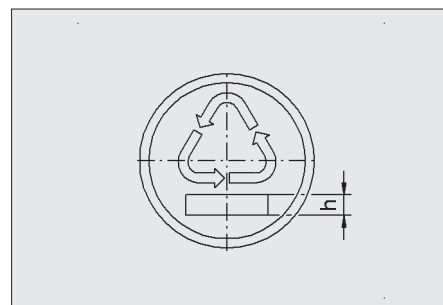
Bestellbeispiel:

0190 Z 08

Type d



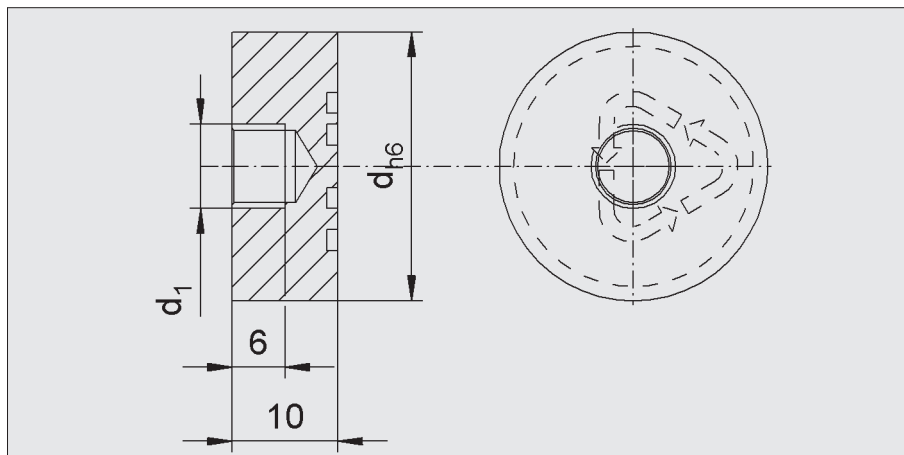
d= 8, 10, 12, 16 mm



Matière: 1.2311

Werkstoff: 1.2311

| No d'article Artikelnummer | d h6 | d1 | h | h1 |
|-------------------------------|---------|----|-----|-----|
| 0190 08 | 8 | M4 | 2,0 | 4,4 |
| 0190 10 | 10 | | | 5,5 |
| 0190 12 | 12 | M6 | 2,5 | 6,2 |
| 0190 16 | 16 | M6 | 3,0 | 8,3 |



Inserts symbole de recyclage

Recycling Einsätze

DIN 6120

Matière: 1.4034 - 50/55 HRC

Werkstoff: 1.4034 - 50/55 HRC

Les deux derniers chiffres de la référence de commande des inserts indiquent la spécification de la matière.

Die Materialspezifikation erfolgt über die letzten beiden Ziffern der Recycling-Einsatz-Bestellnummern.

Exemple de commande:

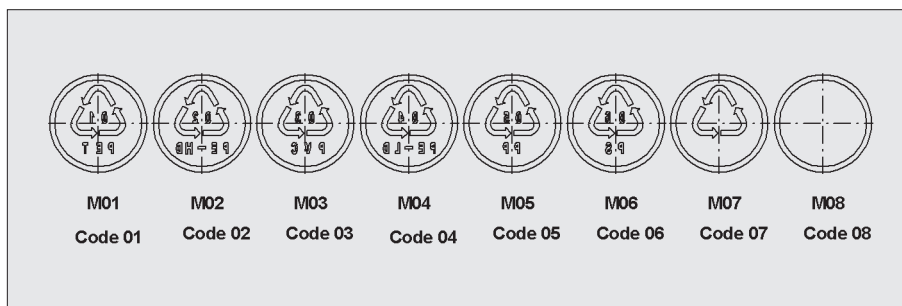
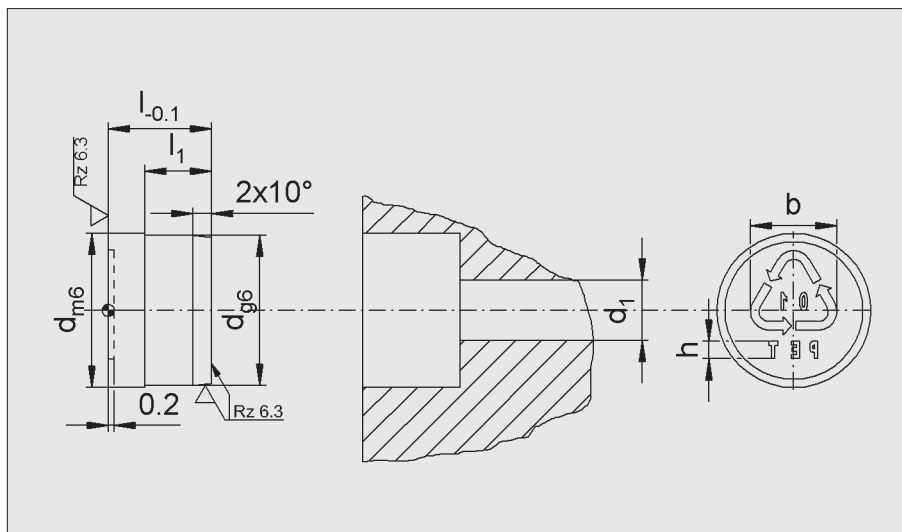
Bestellbeispiel:

0191 10 12 01

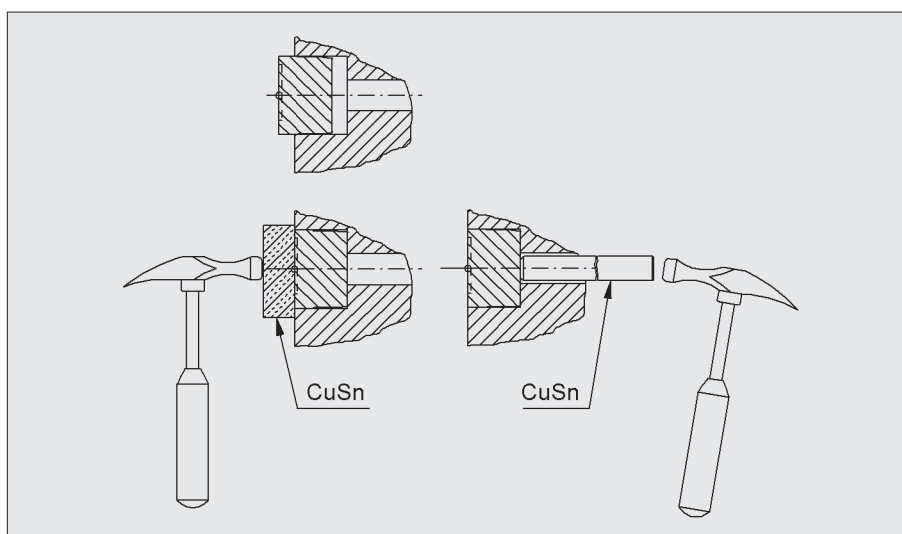
d | Code

Pour plus de détails techniques, s'il vous plaît visitez www.cumsa.com ou demandez notre catalogue complet de CUMSA.

Für mehr technische Details besuchen Sie auch die Homepage www.cumsa.com oder fordern Sie unseren Gesamt-CUMSA Katalog an.

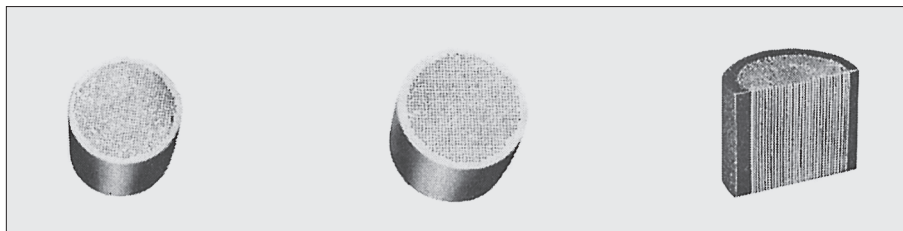


| No d'article Artikelnummer | d | l | d ₁ | l ₁ | h | b |
|-------------------------------|----|----|----------------|----------------|-----|------|
| 0191 1012.. | 10 | 12 | 8 | 7 | 1,5 | 5,6 |
| 0191 1212.. | 12 | | 10 | | 1,8 | 6,8 |
| 0191 1616.. | 16 | 16 | 12 | 9 | 2,4 | 9 |
| 0191 2016.. | 20 | | 16 | | 3,2 | 11,5 |



Inserts de dégazage SV

Entlüftungseinsätze SV

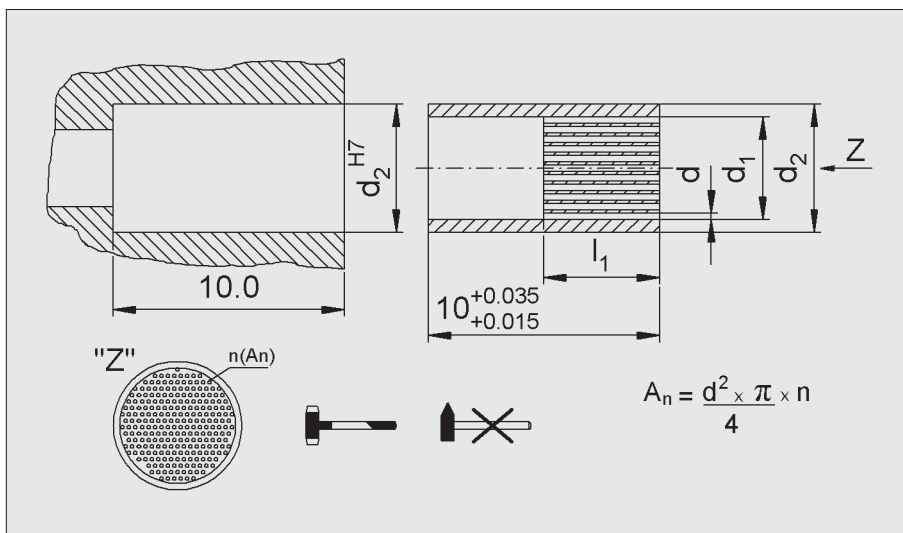


Exemple de commande:

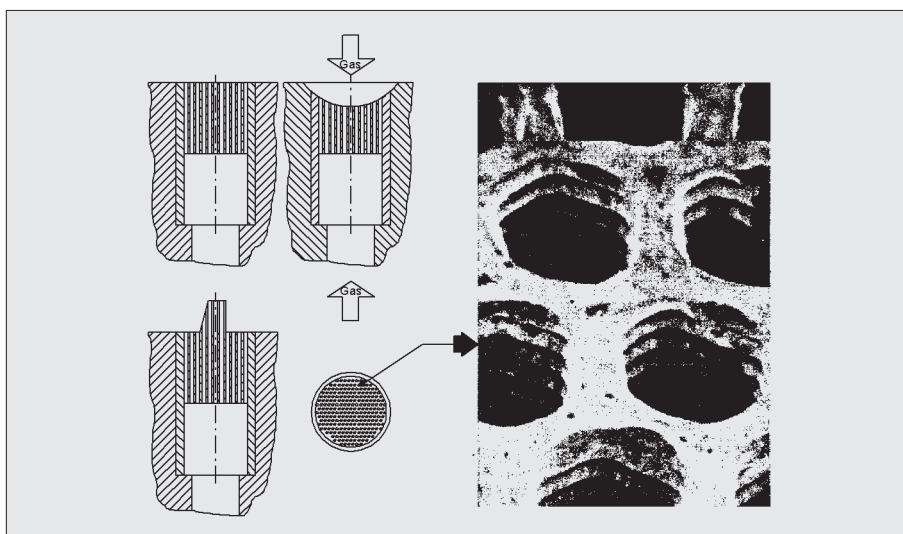
Bestellbeispiel:

0194 SV 02 05

Type d2 d



| No d'article Artikelnummer | d ₂ | d | d ₁ | l ₁ | n | A _n mm ² | | |
|-------------------------------|----------------|------|----------------|----------------|-----|-----------------------------------|-----|-------|
| 0194 SV 0205 | 2,0 | 0,05 | 1,7 | 10 | 250 | 0,49 | | |
| 0194 SV 0405 | 4,0 | 0,05 | 2,0 | 3 | 400 | 0,78 | | |
| 0194 SV 0603 | 6,0 | 0,03 | 3,0 | 5 | 880 | 0,622 | | |
| 0194 SV 0605 | 6,0 | 0,05 | 4,0 | | | 1,728 | | |
| 0194 SV 0803 | 8,0 | 0,03 | 3,0 | 3 | 500 | 0,622 | | |
| 0194 SV 0805 | | 0,05 | 4,0 | | | 1,728 | | |
| 0194 SV 0810 | | 0,10 | 6,0 | | | 3,93 | | |
| 0194 SV 08101 | 10,0 | 0,10 | 6,0 | 5 | 880 | 6,91 | | |
| 0194 SV 1003 | | | | | | 0,03 | 3,0 | 0,622 |
| 0194 SV 1005 | | | | | | 0,05 | 4,0 | 1,728 |
| 0194 SV 1010 | | | | | | 0,10 | 6,0 | 6,91 |



Usinage seulement par électroérosion.

Bearbeitung nur mit erodieren möglich.